

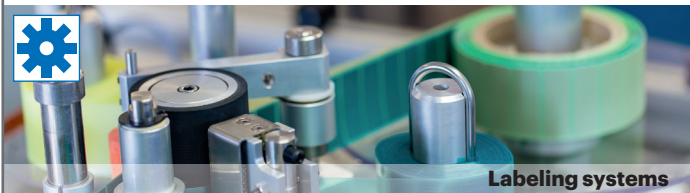
The World of Labeling - A Perfect System



Label variety



Thermal printing systems



Labeling systems

CCL Design




5000+
Number of People


32
Manufacturing Locations


7
R&D Centres

- Nameplates
- Security labels
- Functional die-cut parts
- Labeling systems
- Thermal printing systems
- Barcode reading systems



www.ccl-design-stuttgart.com



LABEL ON LABEL

Identification

one above the another



Certifications



Location Nufringen:
IATF 16949, ISO 14001, ISO 9001, TISAX
Plant Nuremberg:
EN 9100, ISO 14001, ISO 9001, EMAS



CCL Design Stuttgart GmbH

Carl-Benz-Straße 4
71154 Nufringen
Phone: +49 7032 9561 - 0
Fax: +49 7032 9561 - 271
eMail: STUinfo@cclind.com

Plant Nuremberg
Haimendorfer Str. 57
D-90571 Schwaig
Phone: +49 911 95303 - 0
Fax: +49 911 95303 - 33
eMail: STUNinfo@cclind.com



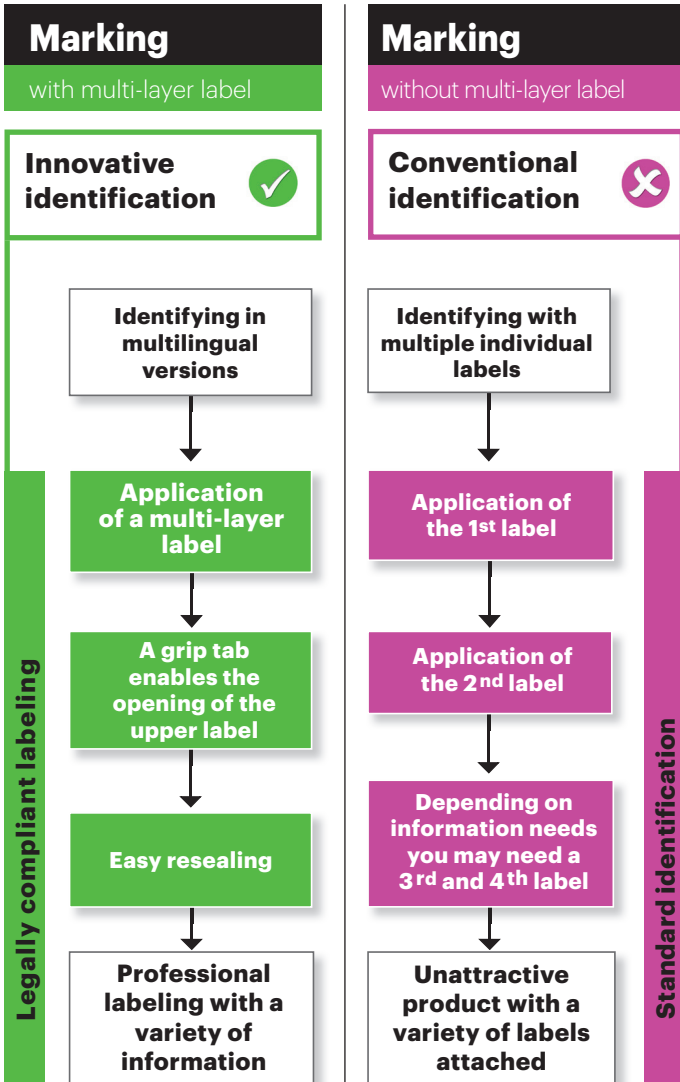
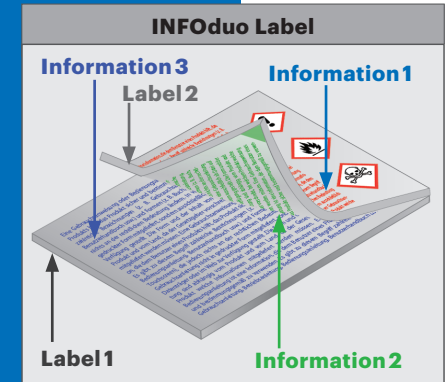
Multi-layer
label



Benefit from the advantages

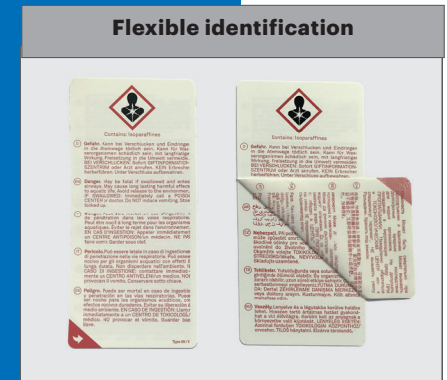
Efficient Flow

- **One label consisting of two layers**
- **The top label - the jewelry side; the inner label contains legally required texts and product information**
- **Easy to open and resealable**
- **The multi-layer label is permanently connected to your product**
- **Multi-colored printable version**



Product

- A lot of information with low space requirements
- Fulfills the legal labeling guidelines
- Foldable and resealable
- Special materials offer possibilities to stick the label even on very small areas
- Complete service; individually imprinted with series data or production data is possible
- Automatic application of multi-layer labels on your product is provided by our application systems



A lot of information on limited space.