

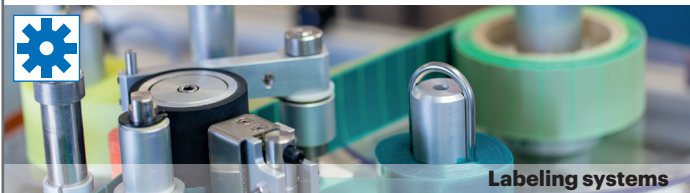
# The World of Labeling - A Perfect System



Label variety



Thermal printing systems



Labeling systems

## CCL Design



  
5000+  
Number of People

  
32  
Manufacturing Locations

  
7  
R&D Centres

- Nameplates
- Security labels
- Functional die-cut parts
- Labeling systems
- Thermal printing systems
- Barcode reading systems



SHEETED PRODUCT

# Identification

## Certifications



Location Nufringen:  
IATF 16949, ISO 14001, ISO 9001, TISAX  
Plant Nuremberg:  
EN 9100, ISO 14001, ISO 9001, EMAS



## CCL Design Stuttgart GmbH

Carl-Benz-Straße 4  
71154 Nufringen  
Phone: +49 7032 9561 - 0  
Fax: +49 7032 9561 - 271  
eMail: STUinfo@cclind.com

**Plant Nuremberg**  
Haimendorfer Str. 57  
D-90571 Schwaig  
Phone: +49 911 95303 - 0  
Fax: +49 911 95303 - 33  
eMail: STUNinfo@cclind.com

## WINboard®

Decals for  
laser  
printers

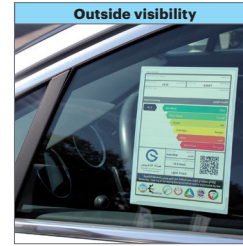
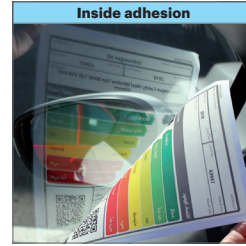


[www.ccl-design-stuttgart.com](http://www.ccl-design-stuttgart.com)

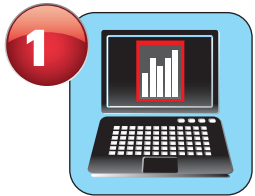
# WINboard®

## As Decals

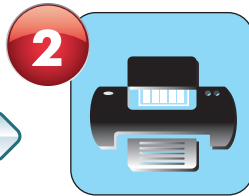
## Advantages



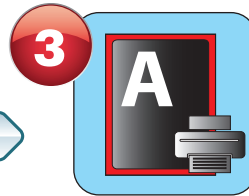
- Stick inside – read outside
- Protected against weathering
- Printable on both sides
- Removal without residue
- For laser printers and copiers



**Design A4 or Letter**  
observe min 9mm [0.35"]  
peel edge margins



**Laser printer/copier**  
140 g/m<sup>2</sup> [40 lb]  
envelope / manual



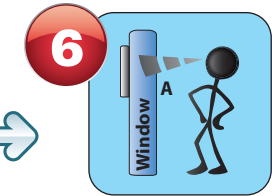
**Multipurpose tray**  
Print  
Side A



**Result printed**  
WINboard



**Remove peel edges**  
Only remove outer margins  
on Side A

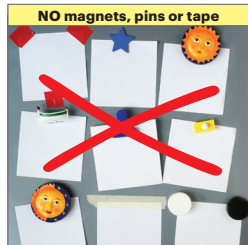


**Apply**  
behind glass

# WINboard®

## As Announcements

## Advantages



- Cost and time savings
- Weather resistant
- Flexible Uses
- Removal without residue
- For laser printers and copiers



**Design**  
A4 or Letter



**Laser printer/copier**  
140 g/m<sup>2</sup> [40 lb]  
envelope / manual



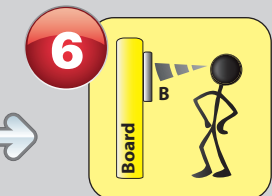
**Multipurpose tray**  
Print  
Side B



**Result printed**  
WINboard



**Remove peel edges**  
Only remove outer edges  
Side A



**Apply**  
to smooth  
surfaces